

# DPK6

## Duct Probe Unit for Generation6 Fire Detectors

### ZETTLER

**The DPK6 duct probe units Smoke detectors are not normally mounted directly inside ducts because the airflow only allows the detector to sample air from a small section of the duct and such detectors would rapidly become dirty. Instead, ducting is protected by the use of probe units which gather air from a cross section of the duct and pass it through a smoke detector head.**



For most applications, smoke or combustion products are likely to have travelled some distance ageing the smoke prior to reaching the probe unit. It is therefore normally recommended that an optical smoke detector be fitted, and this is often a requirement of Building regulations. The DPK6 duct probe units use Generation6 850PH and 830PH Multi Sensor Smoke Detectors.

DPK6 Duct Probe Units have been developed to detect smoke in ventilation ducts. They offer significant benefits in terms of performance and installation. The system comprises only one single duct probe tube which improves efficiency and reduces installation time. The DPK6 duct smoke detector housing is designed to comply with the stringent demands new European standard prEN 54-27. The system fulfils all the requirements for safe fire detection with airflow speeds from 0,5 m/s to 20 m/s.

#### **Basic principles for positioning**

For the airflow through the adaptor to be representative of the airflow in the ventilation duct, the detector should be installed at a place where normally flow meters etc. are sited. Please see the mounting instructions supplied with the product.

#### **Features**

- DPK6 for use with Generation6 multi-sensor detectors 850PH and 830PH with built-in 4B-C 4" Continuity Base
- Designed to comply with prEN 54-27
- One-pipe air sampling system
- Patented venturi pipe and duct housing
- Test hole on cover
- Simple installation
- Simple service and maintenance

# DPK6 Duct Probe

## Installation

The venturi pipe is made of aluminium and can easily be shortened to suit the diameter of the duct (Hole diameter: 38 mm). With insulated or circular ducts - use the mounting bracket (hole diameter is then 51 mm).

## Function Test

When installation is complete, the detector should be tested. This can be carried out with smoke or test gas for smoke detectors by using the test hole in the cover, eliminating the need to disassemble the unit.

## Technical Data

### Mechanical specifications

Dimensions (W x H x D)	165 x 280 x 85 mm
Cable Entry	4 x M20 Gland Entry Knock Outs
Material	ABS plastic
Colour	Grey (RAL 7001)
IP rating	IP 54
Weight (with base)	700 g

## Environmental specifications

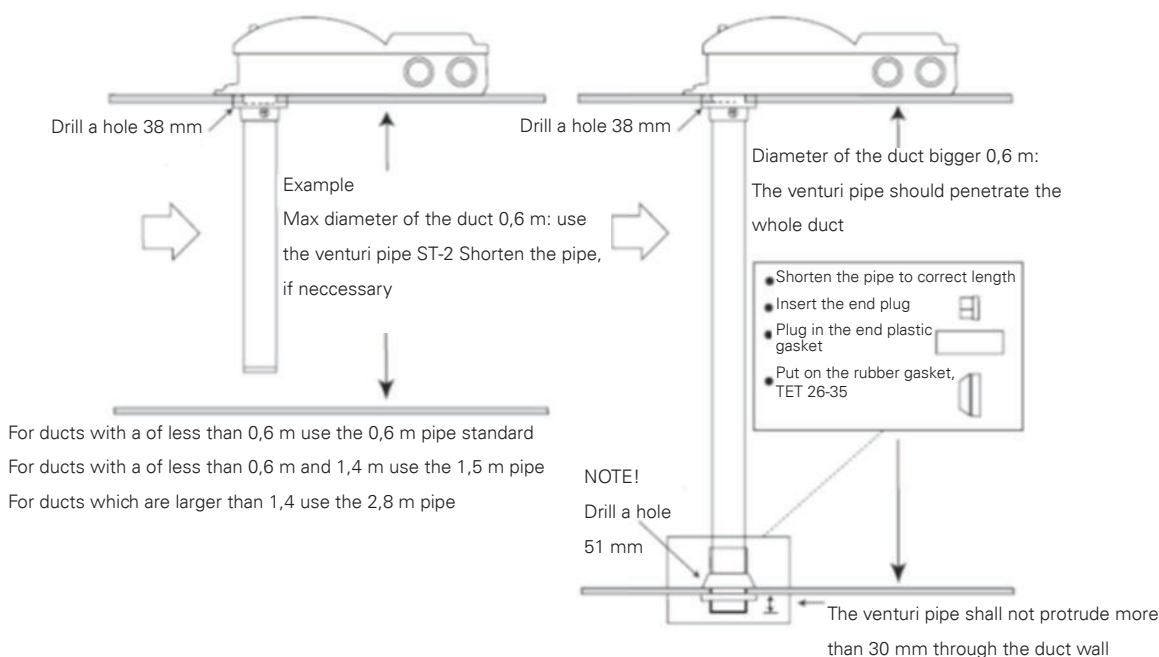
Permissible air speed	1 – 20 m/s
Ambient temperature	-20 to +70 °C
Humidity (max.)	up to 95 % rh (non condensing)

## Approval

VdS G214123

## Ordering information

517.025.056	DPK6 Duct Probe with 4B-C 4" Continuity Base
517.025.058	DPK6-60 - Duct Probe Tube 60 cm
517.025.059	DPK6-150 - Duct Probe Tube 150 cm
517.025.060	DPK6-280 - Duct Probe Tube 280 cm
517.025.061	DPK6-MB - Duct Probe Mounting bracket
517.025.055	DPKF - Filter



ZETTLER, is a leading brand of fire detection products in the European market. The ZETTLER fire detection product line includes a wide range of EN54 CPD approved fire detection products carrying approvals and cross-listings, including VdS and NF. The ZETTLER product lines are available through ZETTLER Authorised Distributors as well as many Johnson Controls offices around the world.

Tyco Fire & Security GmbH, Victor von Bruns Strasse 21, CH-8212 Neuhausen am Rheinfall, Switzerland

© 2017 Johnson Controls. All rights reserved. All specifications and other information shown were current as of document revision date and are subject to change without notice.