

# Addressable Manual Call Point Resettable Unit MCP5

Instruction Sheet  
R10029GB0



## **Schneider Electric Fire & Security Oy**

Sokerilinnantie 11 C  
FI-02600 Espoo, Finland  
Tel: +358 10 446 511  
Website: [www.schneider-electric.com](http://www.schneider-electric.com)  
Document number: R10029GB0  
Published: 18.03.2019

© 2018 – Schneider Electric. All Rights Reserved. This information is only to be used as guidance. Subject to changes and errors.

# Contents

<b>1</b>	<b>Manual Call Point.....</b>	<b>4</b>
1.1	Mechanical installation .....	4
1.2	Electrical installation.....	5
1.3	Electrical connections .....	5
1.4	Product Codes .....	5
<b>2</b>	<b>Call point accessories.....</b>	<b>6</b>
2.1	REPLACEMENT GLASS ELEMENT – KG1 .....	6
2.2	REPLACEMENT FLEXIBLE ELEMENT – PS210 .....	6
2.3	MANUAL CALL POINT COVER – PS200 .....	7
2.4	SPARE TEST KEYS – SC070 .....	7
<b>3</b>	<b>Test, element replacement and reset of the call point.....</b>	<b>8</b>
3.1	To test .....	8
3.2	To replace glass.....	8
3.3	To reset/resettable element .....	8

# 1 Manual Call Point

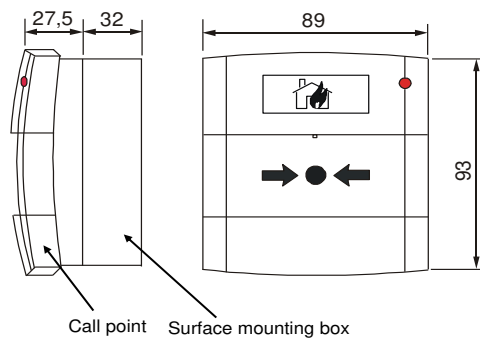
MCP5 Addressable Manual Call Point for Esmi Sense FDP and FX 3NET Fire Detection System

MCP5 manual call points are used in the Esmi Sense FDP and FX 3NET fire detection system. The MCP5 call point is compatible with the SLC loop interface board.

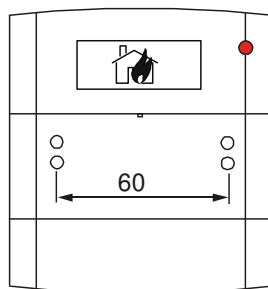
The MCP5 call point is designed for indoor use and it is fully approved to the latest EN54-11 standard.

## 1.1 Mechanical installation

The MCP5 call point can be installed as either a flush or surface mounted device.



*100 mm free space must be left below the call point*



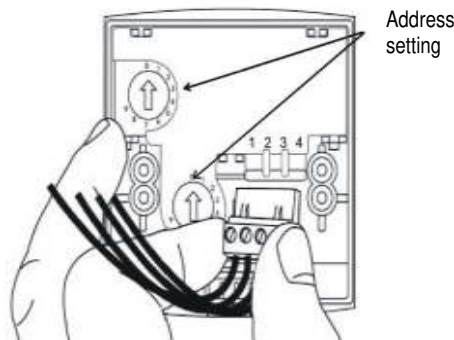
*Distance between mounting holes is 60 mm*



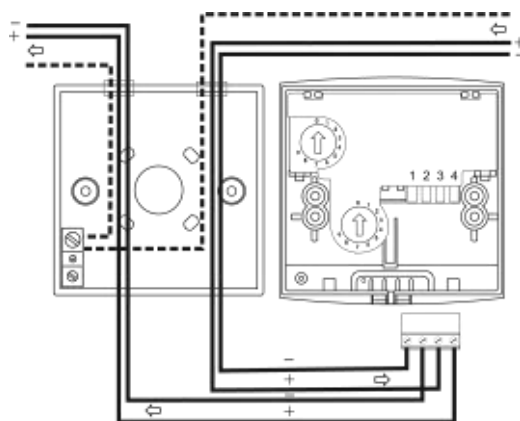
EN-version with its burning house symbol

## 1.2 Electrical installation

After wiring terminal connector, plug connector into appropriate position, see connection details (below).



## 1.3 Electrical connections

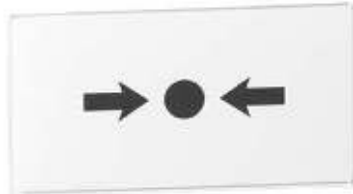


## 1.4 Product Codes

Product codes		
MCP5A-RP01FF-01	FFS06423740EN	Resettable unit, no isolator, EN54 symbols
MCP5A-RP02FF-01	FFS06423742EN	Resettable unit, with isolator, EN54 symbols

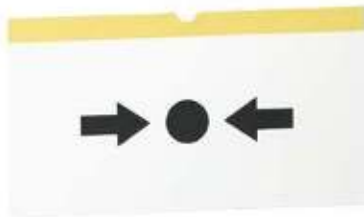
## 2 Call point accessories

### 2.1 REPLACEMENT GLASS ELEMENT – KG1



Material	Plastic covered glass
Resetting function	Glass must be replaced
Product code	FFS06424900EN
Glass elements in package	10 pcs

### 2.2 REPLACEMENT FLEXIBLE ELEMENT – PS210



Material	Plastic
Resetting function	Test & Re-set facility
Product code	FFS06424920
Elements in package	10 pcs

## 2.3 MANUAL CALL POINT COVER – PS200

Transparent hinged cover for call point.



Cover dimensions	90 x 104 mm
Weight	35 g
Product code	FFS06424502

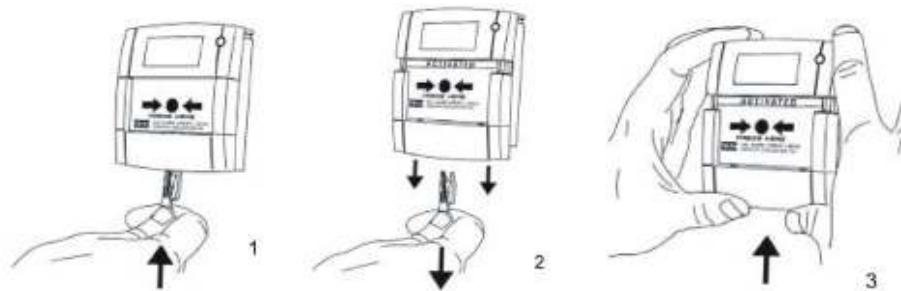
## 2.4 SPARE TEST KEYS – SC070



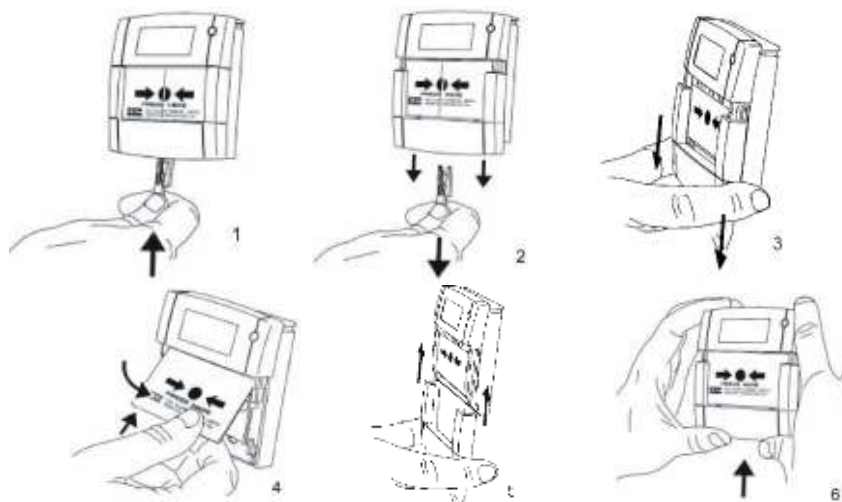
For testing and resetting MCP5 and M500KAC manual call points	
Product code	FFS06424510
Test keys in package	10 pcs

### 3 Test, element replacement and reset of the call point

#### 3.1 To test



#### 3.2 To replace glass



#### 3.3 To reset/resettable element

