

# Waterproof Addressable Manual Call Point WCP5A Instruction Sheet

R10006GB0



## **Schneider Electric Fire & Security Oy**

Sokerilinnantie 11 C  
FI-02600 Espoo, Finland  
Tel: +358 10 446 511  
Website: [www.schneider-electric.com](http://www.schneider-electric.com)  
Document number: R10006GB0  
Published: 18.03.2019

© 2018 – Schneider Electric. All Rights Reserved. This information is only to be used as guidance. Subject to changes and errors.

# Contents

<b>1</b>	<b>Waterproof Addressable Manual Call Point WCP5A.....</b>	<b>4</b>
1.1	Dimensions .....	4
1.2	Wall mounting of back box.....	5
1.3	Fitting the WCP cover to the back box.....	5
1.4	WCP cover removal .....	5
1.5	LED status (tri colour) .....	6
1.6	Electrical connection .....	6
1.7	Product Codes .....	6
<b>2</b>	<b>Call point accessories.....</b>	<b>7</b>
2.1	REPLACEMENT GLASS ELEMENT – KG1EN.....	7
2.2	REPLACEMENT FLEXIBLE ELEMENT – PS210 .....	7
2.3	MANUAL CALL POINT COVER – PS200 .....	7
2.4	SPARE TEST KEYS – SC070 .....	8
<b>3</b>	<b>Test, element replacement and reset of the call point.....</b>	<b>9</b>
3.1	To test .....	9
3.2	To replace glass.....	9
3.3	To reset/resettable element .....	9

# 1 Waterproof Addressable Manual Call Point WCP5A

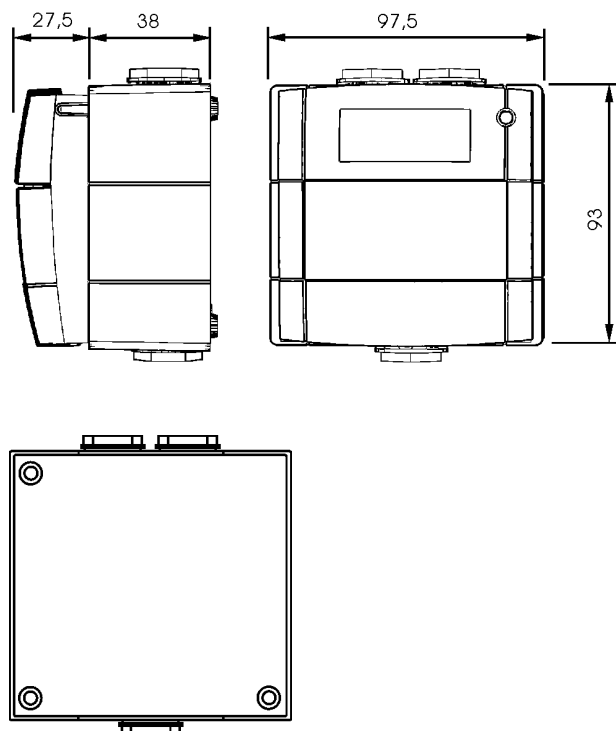
The outdoor WCP is an IP67 sealed manual call point product. The enhanced environmental protection allows the unit to be installed in many external environments where water and dirt are likely to be present, making it a true waterproof and outdoor product.

The WCP5A call point is suitable for outdoor use. It is compatible with the FX-SLC loop interface.

The model WCP5A provides both signaling of alarm to the monitoring control panel, and local led indication of activation.

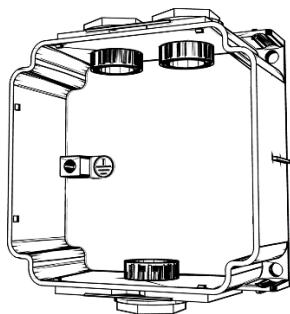
The model WCP5A also includes on board isolation, providing short circuit protection of the loop.

## 1.1 Dimensions



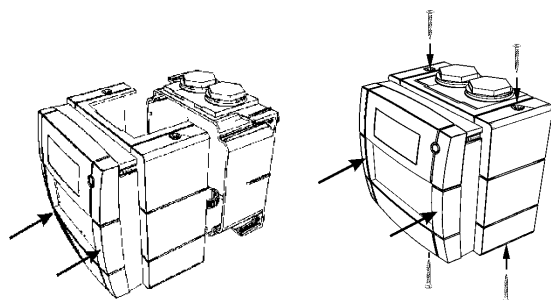
## 1.2 Wall mounting of back box

Mounting the back box to a suitably flat surface using the three fixing holes and the screws provided in the installation pack. The cable entry holes should be in the vertical plane. The back box can be mounted with either the single or the double entry holes at the top.



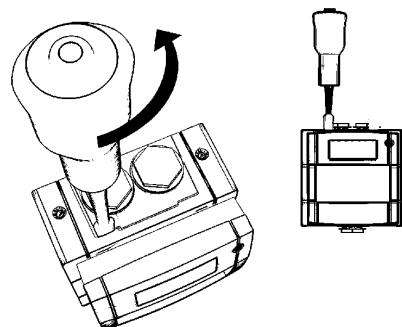
## 1.3 Fitting the WCP cover to the back box

Plug the 4 way terminal connector onto the appropriate position as shown. Ensure that the O-ring is correctly seated in the channel on the rear of the cover. Place the cover squarely over the back box and carefully push the cover until the locating clips have engaged. Do not use excessive force. It is recommended that the 4 fixing screws are used to lock the cover into place.



## 1.4 WCP cover removal

To remove the cover, undo and remove the 4 cover fixing screws. Place the edge of a large flat bladed screwdriver into the slot between the cover and back box as shown in below and gently twist until the latches are disengaged. Pull cover away from the back box.

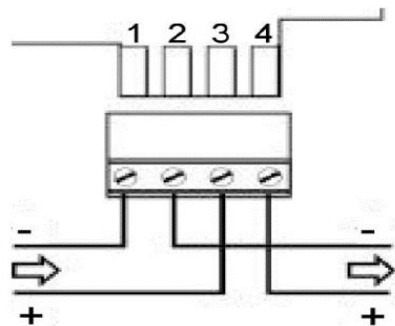
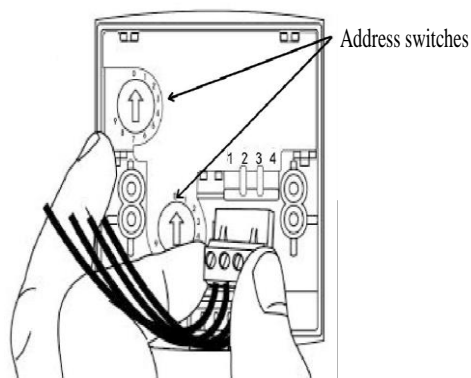


## 1.5 LED status (tri colour)

The LED status is controlled by Fire Panel commands and can be set to pulse Green each time the device is polled, continuous Red to indicate Fire. Yellow is used to indicate isolator status.

## 1.6 Electrical connection

After wiring the terminal connector, plug into appropriate position, see connection details (below).

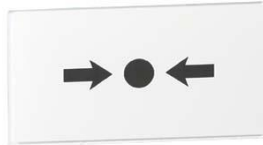


## 1.7 Product Codes

Product	Product Code	Description
WCP5A-RP02SF-E010-01	FFS06423668E	Isolated, EN, flex element, Esmi brand
WCP5A-RP02SF-E010-02	FFS06423668P	Isolated, EN, flex element, Pelco brand
WCP5A-RP02SF-E010-03	FFS06423668	Isolated, EN, flex element, not branded

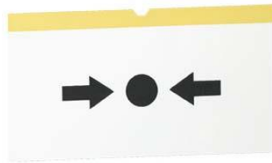
## 2 Call point accessories

### 2.1 REPLACEMENT GLASS ELEMENT – KG1EN



Material	Plastic covered glass
Resetting function	Glass must be replaced
Esmi product code	06424900EN
Glass elements in package	5 pcs

### 2.2 REPLACEMENT FLEXIBLE ELEMENT – PS210



Material	Plastic
Resetting function	Test & Re-set facility
Esmi product code	06424920
Elements in package	10 pcs

### 2.3 MANUAL CALL POINT COVER – PS200

Transparent hinged cover for call point.



Cover dimensions	90 x 104 mm
Weight	35 g
Esmi product code	06424502

## 2.4 SPARE TEST KEYS – SC070

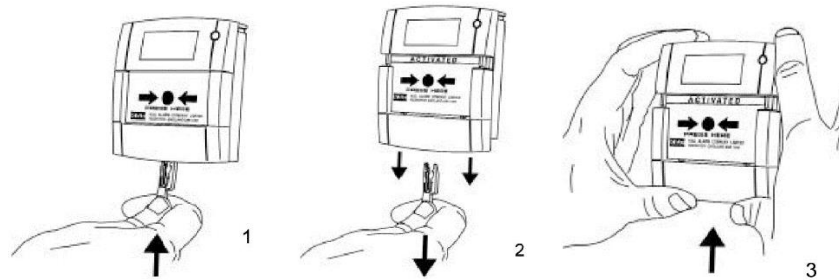


For testing and resetting MCP5 and M500KAC manual call points	
Esmi product code	06424510
Test keys in package	10 pcs

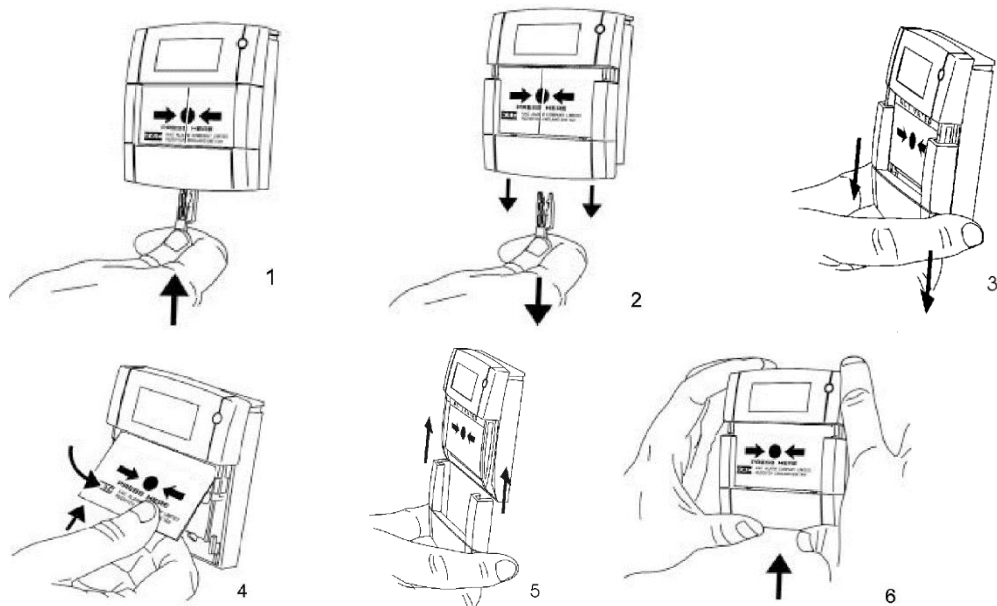


### 3 Test, element replacement and reset of the call point

#### 3.1 To test



#### 3.2 To replace glass



#### 3.3 To reset/resettable element

