

# SpaceLogic™ HMIs

## Operator Display Installation Sheet HMIST6400SL



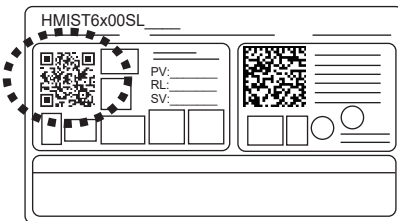
## TABLE OF CONTENTS

1.	INTRODUCTION .....	1
2.	PACKAGE CONTENTS.....	2
2.1	PART NUMBERS .....	2
2.2	SPARE PARTS (NOT INCLUDED).....	2
2.3	OTHER REQUIRED PARTS (NOT INCLUDED) .....	2
2.4	PARTS IDENTIFICATION .....	3
3.	STATUS LED .....	3
4.	GENERAL SPECIFICATIONS .....	3
5.	PANEL CUT DIMENSIONS.....	4
6.	INSTALLATION .....	4
6.1	INSTALLATION REQUIREMENTS .....	4
6.2	INSTALLING OPERATOR DISPLAY ON A PANEL .....	5
6.3	REMOVING OPERATOR DISPLAY FROM A PANEL .....	5
6.4	WIRING.....	5
6.5	PRECAUTIONS .....	6
6.6	REPLACING THE BATTERY .....	6
6.7	REPLACING THE INSTALLATION GASKET .....	6
7.	REGULAR CLEANING .....	7
	ADDENDUM CALIFORNIA PROPOSITION 65 WARNING STATEMENT FOR CALIFORNIA RESIDENTS.....	7



## 1. INTRODUCTION

The SpaceLogic™ Operator Display is a touch-screen Human Machine Interface (HMI) for SpaceLogic controllers, designed for local monitoring of building controllers in small and medium-sized buildings, as well as in large buildings with comprehensive building management systems. Operator Display is specifically designed for equipment rooms and it simplifies operations, service, and troubleshooting for System Integrators and Service Engineers, as well as for nontechnical users (notably Facility Managers and Janitors). For detailed information on product usage, you can refer to the Operator Display Operating Guide. This document can be found by scanning the QR code located on the product label or by visiting our support site (see below).



**NOTE:** Electrical equipment should be installed, operated, serviced, and maintained only by qualified personnel. No responsibility is assumed by Schneider Electric nor any of its affiliates or subsidiaries (hereinafter, referred to as Schneider Electric) for any consequences arising out of the use of this material. If the equipment is used in a manner not specified by the manufacturer, the protection provided by the equipment may be impaired. Carefully read the instructions and all information relevant to this product before trying to install it. The technical literature and declarations of conformity can be accessed on the Schneider Electric Exchange website, [ecoxpert.se.com](http://ecoxpert.se.com). Contact your local Schneider Electric sales office for a hard copy of documentation or additional information.

### ⚠ WARNING

#### HAZARD OF ELECTRIC SHOCK, EXPLOSION OR ARC FLASH

- Remove all power from the device before removing any covers or elements of the system, and prior to installing or removing any accessories, hardware, or cables.
- Unplug the power cable from both this product and the power supply prior to installing or removing the product.
- Always use a properly rated voltage sensing device to confirm power is off where and when indicated.
- Replace and secure all covers or elements of the system before applying power to this product.
- Use only the specified voltage when operating this product.
- Since this product is not equipped with a power switch, be sure to connect a power switch to the power supply.
- Be sure to ground this product's Functional Ground (FG) terminal.

**Failure to follow these instructions can result in death or serious injury.**

### ⚠ WARNING

#### POTENTIAL FOR EXPLOSION

- Do not use this product in hazardous environments.
- Do not connect or disconnect this product unless power has been switched off or the area is known to be non-hazardous.
- Do not attempt to install, operate, modify, maintain, service, or otherwise alter this product except as permitted in this manual.
- Use the USB (micro-B) interface for temporary connection only during maintenance and setup of the device.

**Failure to follow these instructions can result in death or serious injury.**

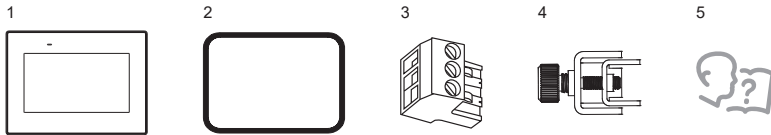
### ⚠ WARNING

#### ELECTRIC SHOCK AND FIRE

- Make a direct connection between the functional ground (FG) terminal and ground.
- Do not connect other devices to ground through the functional ground (FG) terminal of this device.
- Install all cables according to local codes and requirements. If local codes do not require grounding, follow a reliable guide such as the US National Electrical Code, Article 800.

**Failure to follow these instructions can result in death or serious injury.**

## 2. PACKAGE CONTENTS



Please confirm that the following items listed are present. If you find anything damaged or missing, please contact your local distributor.

1. Operator Display x 1
2. Installation gasket (attached to this product) x 1
3. DC power supply connector x 1
4. Installation fasteners x 4
5. Installation sheet (this document) x 1

### 2.1 PART NUMBERS

Product	Part Number
Operator Display 7-inch bundle (Includes HMI device, installation gasket, installation fasteners, screws, DC power supply connector, and installation sheet)	HMIST6400SL

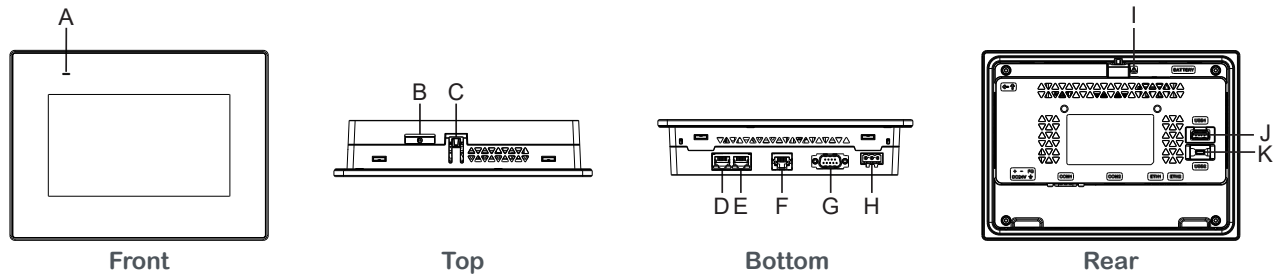
### 2.2 SPARE PARTS (NOT INCLUDED)

Product	Part Number
Installation gasket (Provides dust and moisture resistance when this product is installed into a solid panel (1 piece))	HMIZS53W1
Installation fastener (2 pieces/set)	HMIZSFIXTF1
Power supply connector for small panels (10 pieces/set)	XBTZ3004

### 2.3 OTHER REQUIRED PARTS (NOT INCLUDED)

Product	Part Number
24 VDC power supply (Typical examples)	ABLM1A24004, ABLM1A24006, ABLM1A24012, ABLM1A24025
Micro USB 2.0 OTG cable	–
USB stick (FAT formatted)	–

## 2.4 PARTS IDENTIFICATION



- A. Status LED
- B. Battery slot
- C. Hook
- D. Ethernet interface (ETH2) – *Not used*
- E. Ethernet interface (ETH1)
- F. Serial interface (RJ-45, RS-485) (COM2) – *Not used*
- G. Serial interface (RS-232C) (COM1) – *Not used*
- H. Power plug connector
- I. Safety alert symbol (refer to “Replacing the Battery” on page 6 for safety messages related to the battery)
- J. USB (Type A) interface (USB1)
- K. USB (micro-B) interface (USB2)

### NOTES:

- Use only safe SELV (Safety Extra-Low Voltage) circuits to connect the serial, USB and Ethernet interfaces.
- The serial interface is not isolated.
- The SG (signal ground) and FG (functional ground) terminals of serial interfaces are separated inside this product.

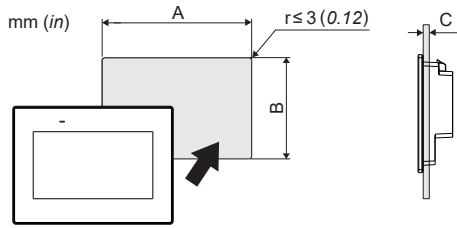
## 3. STATUS LED

- Once the power is turned on, the normal status indication by the LED is: red light > flashing orange > green light.
- For other LED indications, refer to the Operator Display Operating Guide.

## 4. GENERAL SPECIFICATIONS

Rated input voltage	24 VDC
Input voltage limits	19.2 to 28.8 VDC
Power consumption (max.)	9 W
Ambient air temperature	0 to 50 °C (32 to 122 °F)
Ambient air and storage humidity (non condensing, wet bulb temperature 39 °C [102.2 °F] or less)	0% to 90% RH
Pollution degree	2
Atmospheric pressure (operating altitude: 2,000 m [6,561 ft] or lower)	800 to 1,114 hPa

## 5. PANEL CUT DIMENSIONS



A	B	C
190 mm (+1/0 mm) (7.48 in [+0.04/0 in])	135 mm (+1/0 mm) (5.31 in [+0.04/0 in])	1.6 to 5 mm (0.06 to 0.2 in)

## 6. INSTALLATION

### 6.1 INSTALLATION REQUIREMENTS

This product is designed for use on flat surfaces of IP65, Type 4X (indoor use only), or Type 13 enclosures.

Be aware of the following when building this product into an end-use product:

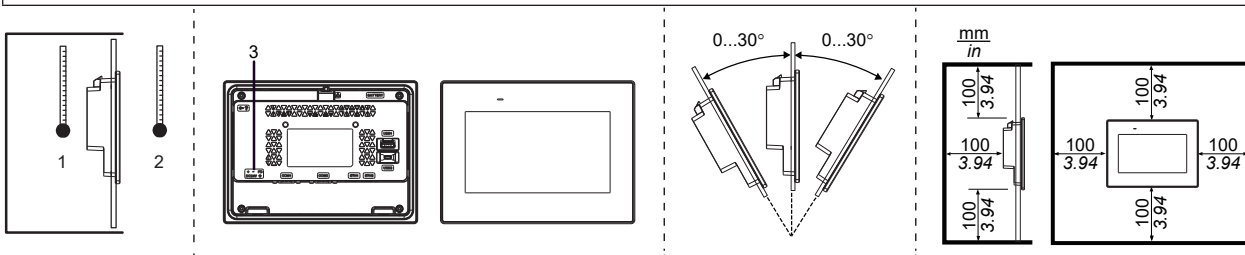
- The rear face of this product is not approved as an enclosure. When building this product into an end-use product, be sure to use an enclosure that satisfies standards as the end-use product's overall enclosure.
- Install this product in an enclosure with mechanical rigidity.
- This product is not designed for outdoor use. UL certification obtained is for indoor use only.
- The recommended torque for installation fasteners is 0.5 Nm (4.4 lbf.in).

## NOTICE

### EQUIPMENT DAMAGE

- Do not install in areas with direct heat source.
- Do not install in areas exposed to direct sunlight.

**Failure to follow these instructions can result in equipment damage.**

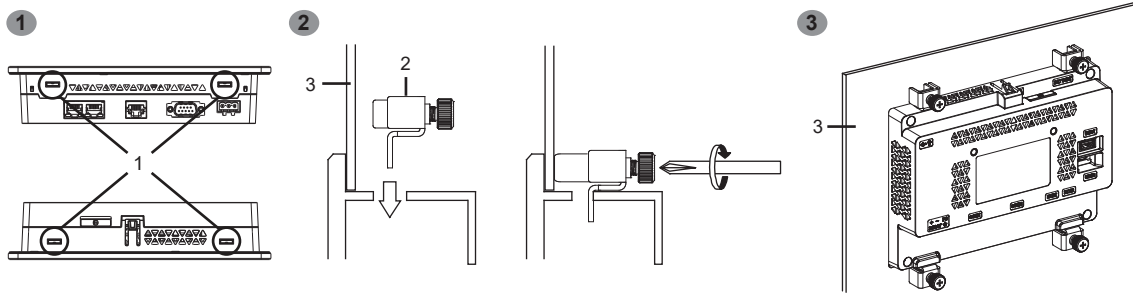


1. Internal temperature
2. External temperature
3. Power connector

### NOTES:

- Metal reinforcing strips may be attached to the inside of the wall, near the panel-cut, to increase its rigidity.
- Even if the installation wall thickness is within the specified range, depending on the wall's material, size, and installation location of this product and other devices, the installation wall could warp. To help prevent warping, the installation surface may need to be strengthened.
- Check that the ambient air temperature and the ambient humidity are within their specified ranges. When installing this product in a cabinet or enclosure, the ambient air temperature is the cabinet's or enclosure's internal temperature.
- Be sure that heat from surrounding equipment does not cause this product to exceed its standard operating temperature.
- When installing this product in a slanted position, the product face should not incline more than 30 degrees.

## 6.2 INSTALLING OPERATOR DISPLAY ON A PANEL



1. Insertion slots
2. Installation fastener
3. Installation panel

**NOTE:** The installation fasteners can also be screwed by hand.

## 6.3 REMOVING OPERATOR DISPLAY FROM A PANEL



Loosen the screws of the fasteners.  
Then, remove the product slowly from the panel while pressing the hook.

## 6.4 WIRING

### ⚠ WARNING

#### UNINTENDED EQUIPMENT OPERATION

- Make sure the ground wire is either the same or heavier gauge than the power wires.
- Do not use aluminum wires in the power supply power cord.
- If the ends of the individual wires are not twisted correctly, the wires may create a short circuit.
- The conductor type is solid or stranded wire.
- Use copper wire rated for 75 °C (167 °F) or higher.
- Use the SELV (Safety Extra-Low Voltage) circuit and LIM (Limited Energy) circuit for DC input.

**Failure to follow these instructions can result in death, serious injury, or equipment damage.**

	+	24 VDC	Power cord diameter	0.75 to 2.5 mm <sup>2</sup> (18 to 13 AWG) <sup>a</sup>
	-	0 VDC	Conductor type	Solid or stranded wire
	FG	Grounded terminal	Conductor length	

a) For UL compatibility, use AWG 14 or AWG 13.

#### NOTES:

- Recommended driver: Flat screwdriver, size 0.6 x 3.5 mm (0.02 x 0.14 in).
- The recommended torque is 0.56 Nm (5 lbf.in).
- Do not solder the cable connection.
- Connect the grounded terminal properly to the ground.

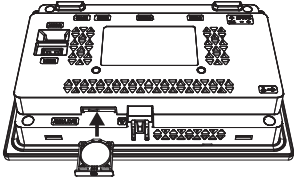
## 6.5 PRECAUTIONS

After checking the wiring route carefully, use this product with the FG terminal connected to the ground.

### GROUNDING

Functional grounding: Grounding resistance of 100 ohms or less and a wire of 2 mm<sup>2</sup> (AWG 14) or thicker, or your country's applicable standard.

## 6.6 REPLACING THE BATTERY



Open the battery slot (refer to "Parts Identification" on page 3) to replace the battery. Only use a replacement battery that is compatible with this product (CR2032).

### ⚠ WARNING

#### EXPLOSION, FIRE, OR CHEMICAL HAZARD

- Only use a replacement battery that is compatible with this product.
- Do not cause a short circuit.
- Recycle or properly dispose of used batteries.
- Do not recharge, disassemble or heat above 80 °C (176°F).
- Use your hands or insulated tools to remove or replace the battery.
- Maintain proper polarity when inserting and connecting a new battery.

**Failure to follow these instructions can result in death or serious injury.**

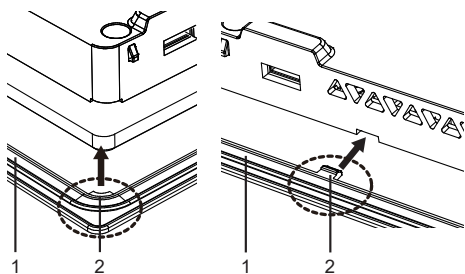
### NOTICE

#### EQUIPMENT DAMAGE

Allow only qualified personnel to change the battery.

**Failure to follow these instructions can result in equipment damage.**

## 6.7 REPLACING THE INSTALLATION GASKET



1. Installation gasket (HMIZS53W1)
2. Protruding point

### NOTICE

#### EQUIPMENT DAMAGE

Ensure the gasket is in good condition to help protect the IP rating.

**Failure to follow these instructions can result in equipment damage.**

## 7. REGULAR CLEANING

### **NOTICE**

#### **EQUIPMENT DAMAGE**

- Power off this product before cleaning it.
- Do not use hard or pointed objects to operate the touch panel.
- Do not use paint thinner, organic solvents, or a strong acid compound to clean the unit.

**Failure to follow these instructions can result in equipment damage.**

When this product screen gets dirty, soak a soft cloth in water with a neutral detergent, wring the cloth tightly, and wipe this product.

## **ADDENDUM CALIFORNIA PROPOSITION 65 WARNING STATEMENT FOR CALIFORNIA RESIDENTS**

**⚠ WARNING:** This product can expose you to chemicals including Lead, which is known to the State of California to cause cancer and birth defects or other reproductive harm, and Bisphenol A (BPA), which is known to the State of California to cause birth defects or other reproductive harm. For more information, go to [www.P65Warnings.ca.gov](http://www.P65Warnings.ca.gov).